

DIGITAL INDUSTRIES SOFTWARE

Simcenter Testlab Scope App

Simcenter/SM-XS01/2406/20240503

Product Information Sheet

Summary

Noise and vibration measurements put ever more pressure on today's engineers and technicians. Customers demand quieter, more comfortable and longer lasting products. Governments impose increasing regulations on noise levels and eco-sustainability. At the same time reduced budgets and increased efficiency targets require more tasks to be done in a shorter time.

This environment has great impact on engineering departments within companies. Faced with the demand to perform more tests with less people in less time and with reduced budgets, versatility is a key requirement for these departments. Test equipment needs to fulfill the same requirements in order to be justifiable for use by test engineers and technicians.

BENEFITS

- Fit for all typical noise and vibration use-cases
- Field diagnostics, mobile measurements, laboratory testing
- Both for expert and non-expert users
- Clearly visible graphics in operational conditions
- Calibrated and equalized audio replay and filtering

FEATURES

- Combined with a SCADAS XS for remote and mobile test
- Can be preconfigured and handed over for use by non-experts
- Real time and offline data validation



The portability and ease of use of the Simcenter SCADAS XS maximizes testing efficiency.

Mobility at fingertips

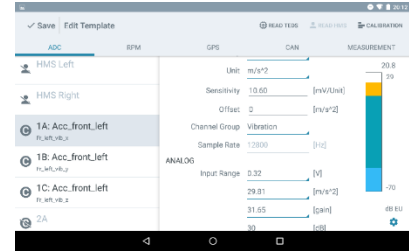
The Simcenter Testlab Scope App is a dedicated Android app that allows operating and wireless monitoring of Simcenter SCADAS XS systems. It allows to prepare measurements without any aid of a computer, visualize in real-time the recorded data, validate any measurement and document runs with comments, delivering a complete test campaign management.

Features

- Android based app for monitoring and control of SCADAS XS settings and measurements
- Designed for tablet displays
- Use an existing measurement setup or create a new configuration from scratch
- Online data viewing and measurement control
- Post-run data validation and signal replay
- Measure and replay video streams from the built-in tablet cameras (Front or Back)



Document measurements with video stream recorded simultaneously with the test data with the built-in tablet cameras

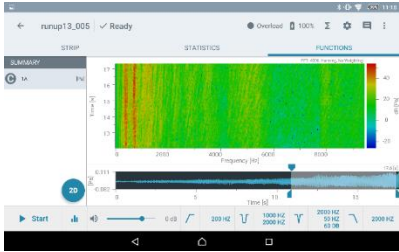
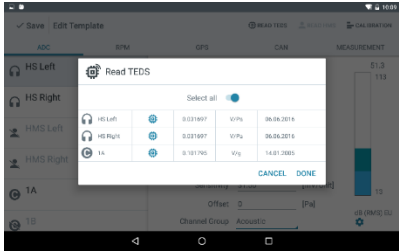


Configuration Selection and Setup

- Selection of pre-defined templates (prepared on tablet or on a PC)
- Creation of new templates
- Signal level feedback during configuration editing
- Calibration of sensors
- Ranging of sensors
- Support of TEDs chip
- Selection of measurement start/stop
- CAN standard OBD-II protocol available without the need of any definition file, with automatic Baud rate detection
- Possibility to measure CAN using user defined *.dbc files
- Tacho missing pulses correction

Acquisition Monitoring and Control

- Base view for fast measurement control and relevant feedback on measurement trigger status
- Strip chart view for time signal overview
- Bar chart for level indication of channels
- Digital display with grouped overview of channels
- Analog display for rpm and speed signals with triggering indication
- Statistical display for overview of selectable statistics per channel (RMS, mean, max, min ...)
- Function view for real time single channel analysis (FFT, octaves, order cuts, loudness, etc.)
- Data-snapping cursors
- Possibility to visualize functions in Colormap displays
- Possibility to define customized names of each measurement

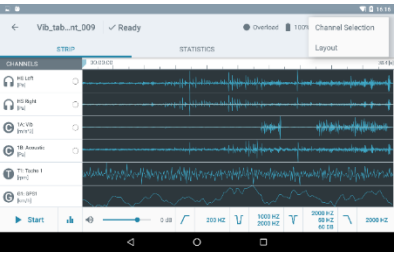
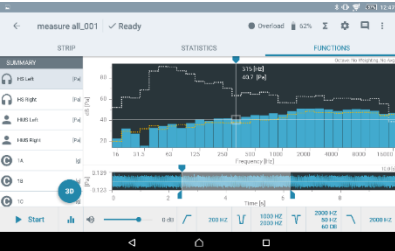
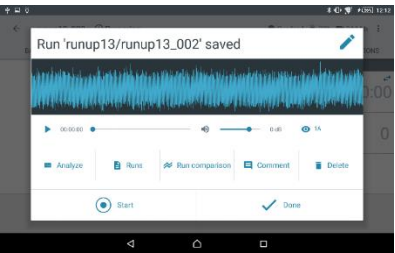


Post run validation and replay

Post-run shortcut view for replay, data validation, run overview, new measurement, new configuration selection or stop of campaign

- Audio replay through Simcenter 3D Binaural Headset
- Add run comment
- Run rename
- Quick access to offline data validation
- Start new measurement,

- Shortcut to measurements overview
- Shortcut to configuration selection



Offline analysis

- Data replay and filtering through Simcenter 3D Binaural Headset:
 - High pass
 - Low pass
 - Band stop
 - Notch

- Playback equalization
 - Linear
 - Free field
 - Diffuse field
- Independent of direction
- Strip chart overview of all channels
- Statistics overview of all channels
- Indication of overload channels
- Single channel analysis
 - FFT
 - Octaves
 - Single Orders
 - Orders
 - Loudness in function of time
 - Specific Loudness,
 - Articulation Index
 - Sound Pressure Level
- Visualization of Reference curves

Ordering information:

Simcenter Testlab Scope App tablet application is part of

- SM-XS.01

Product status

- Available on Android 7 and higher with recommended Android tablet
 - Samsung Tab Active3 running Android 13
 - Huawei MediaPad M3 running Android 7
 - Samsung Tab S5e running Android 12
- Available license configuration: Node-locked only